

**Paper Reference(s)    1BI0/1H**  
**Pearson Edexcel Level 1/Level 2 GCSE**  
**(9–1)**

**Biology**  
**PAPER 1**  
**Higher tier**

**Diagram Booklet**

**In the boxes below, write your name, centre number and candidate number.**

<b>Surname</b>					
<b>Other names</b>					
<b>Centre Number</b>					
<b>Candidate Number</b>					

## **INSTRUCTIONS**

**There may be spare copies of some diagrams in case you need them.**

**THIS DIAGRAM BOOKLET MUST BE  
RETURNED WITH THE QUESTION PAPER  
AT THE END OF THE EXAMINATION.**

# **Contents**

## **Page**

<b>4</b>	<b>Question 2(b)</b>
<b>5</b>	<b>Question 2(b) (Spare copy)</b>
<b>6</b>	<b>Question 3(a)</b>
<b>7</b>	<b>Question 4(a)</b>
<b>8</b>	<b>Question 4(b)(ii)</b>
<b>9</b>	<b>Question 6</b>
<b>10</b>	<b>Question 7(c)</b>
<b>11</b>	<b>Question 8(c)</b>
<b>12</b>	<b>Question 9</b>
<b>13</b>	<b>Question 9(b)</b>

## Question 2(b)

# FIGURE 1

T	T	G	A	T	T	G	C	G	T	A	A
---	---	---	---	---	---	---	---	---	---	---	---

[illegible]

# FIGURE 1

T	T	G	A	T	T	G	C	G	T	A	A
---	---	---	---	---	---	---	---	---	---	---	---

[illegible]

**Question 3(a)****FIGURE 2**

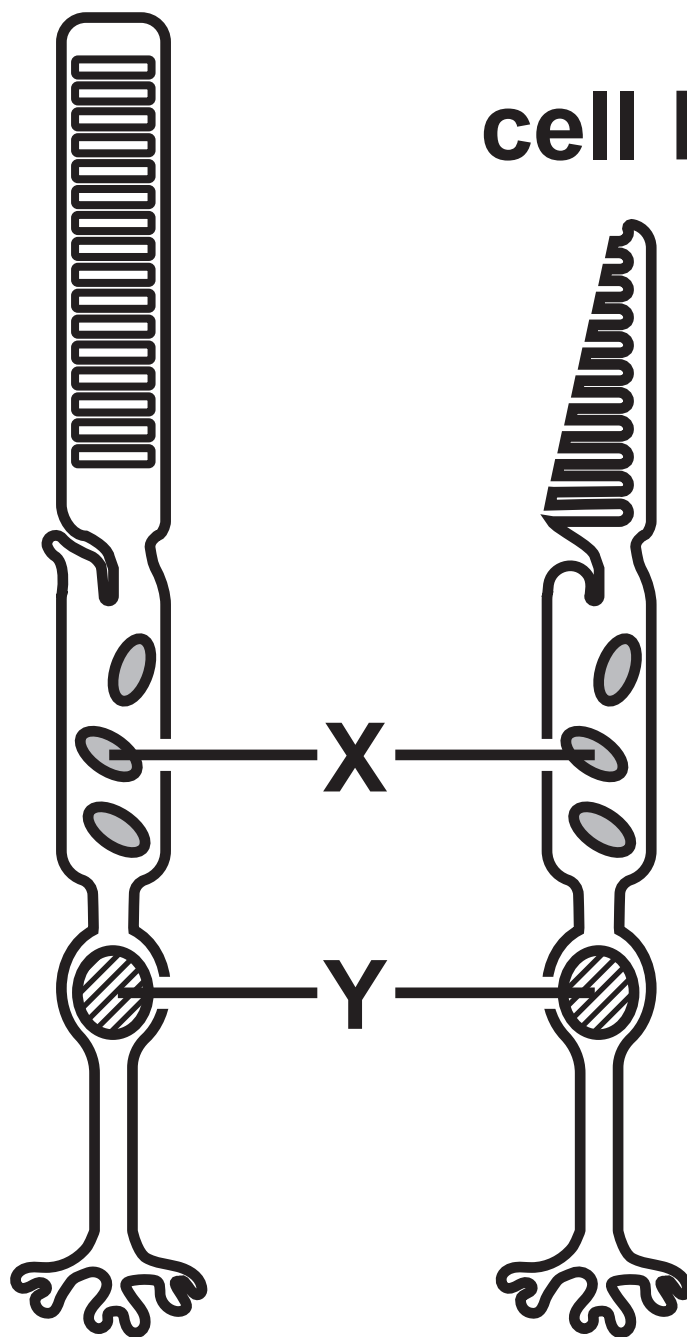
<b>sexually transmitted infection (STI)</b>	<b>number of people diagnosed per 1000 of the population</b>
<b>chlamydia</b>	<b>3·7</b>
<b>gonorrhoea</b>	<b>0·8</b>
<b>genital herpes</b>	<b>0·6</b>
<b>genital warts</b>	<b>1·1</b>
<b>syphilis</b>	<b>0·1</b>

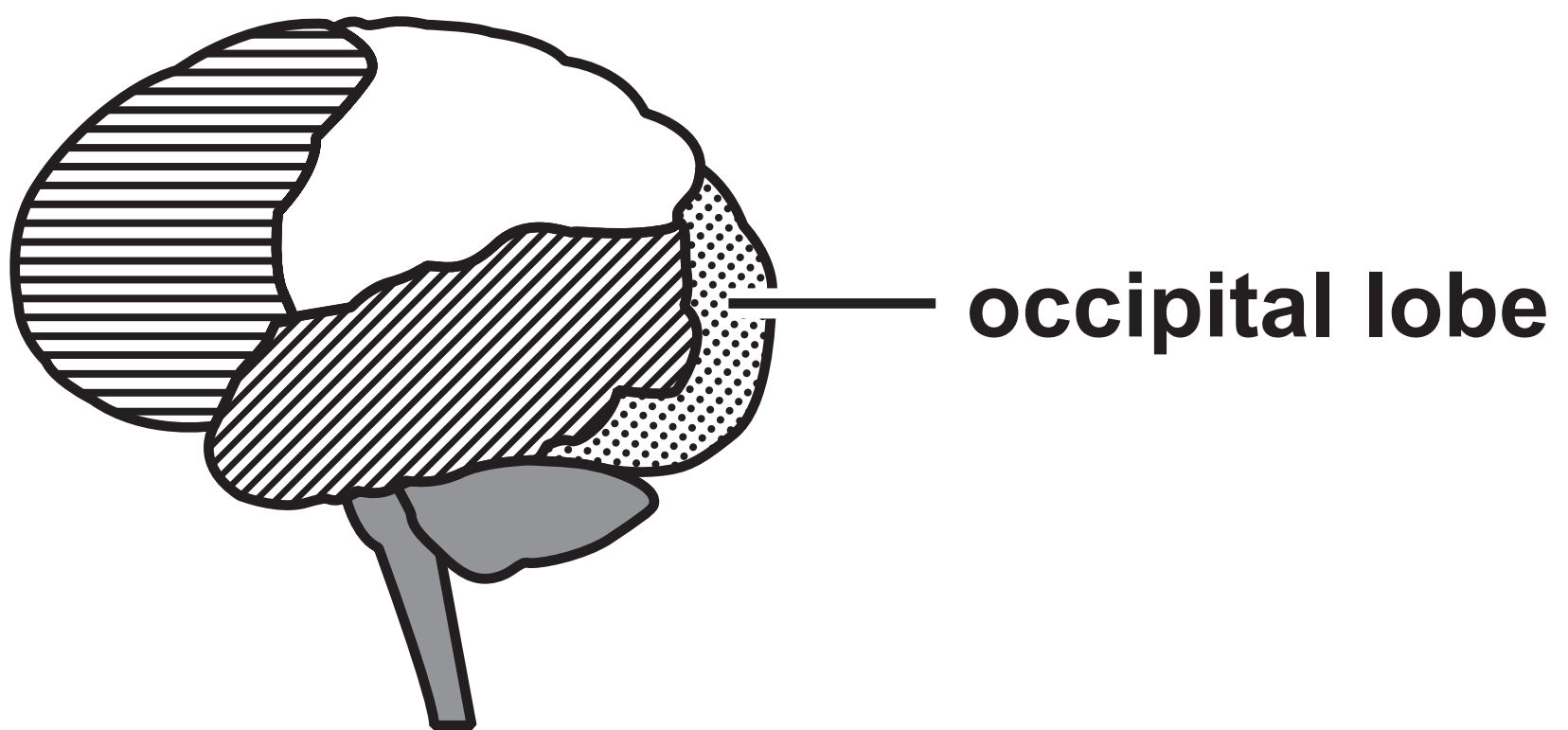
## Question 4(a)

FIGURE 3

cell A

cell B

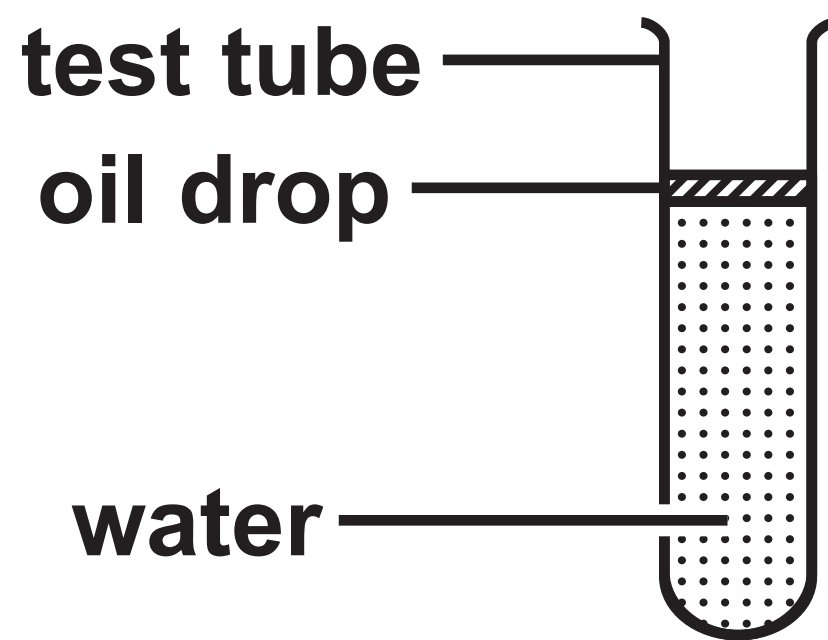


**Question 4(b)(ii)****FIGURE 4**



## Question 6

### FIGURE 5



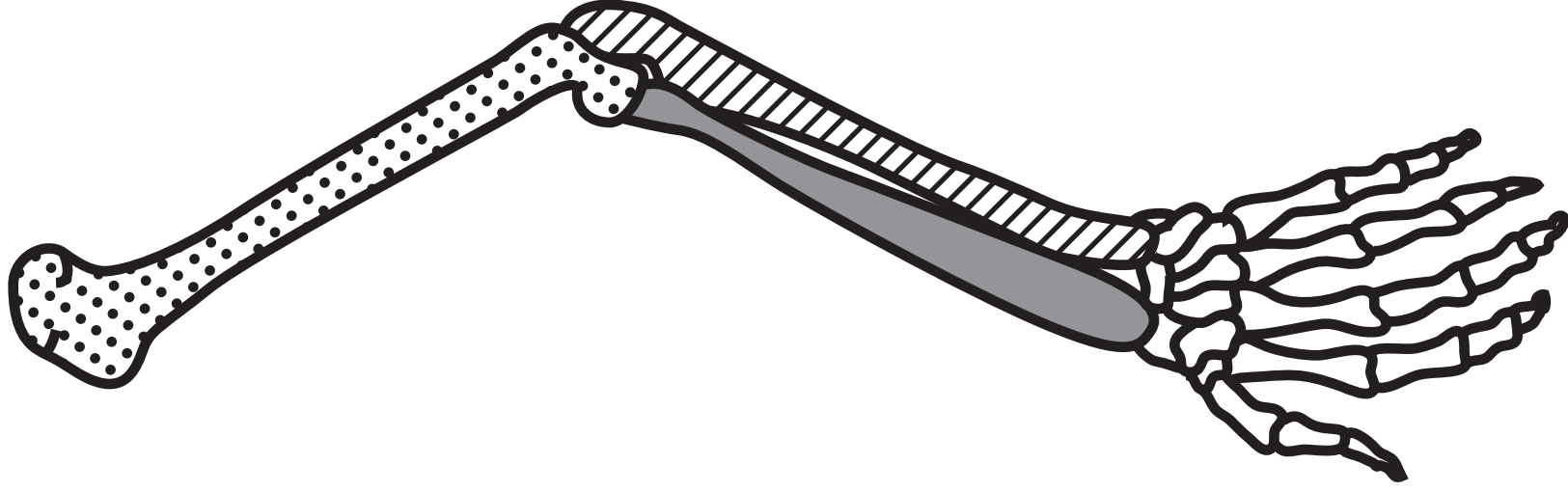
## Question 7(c)

FIGURE 6

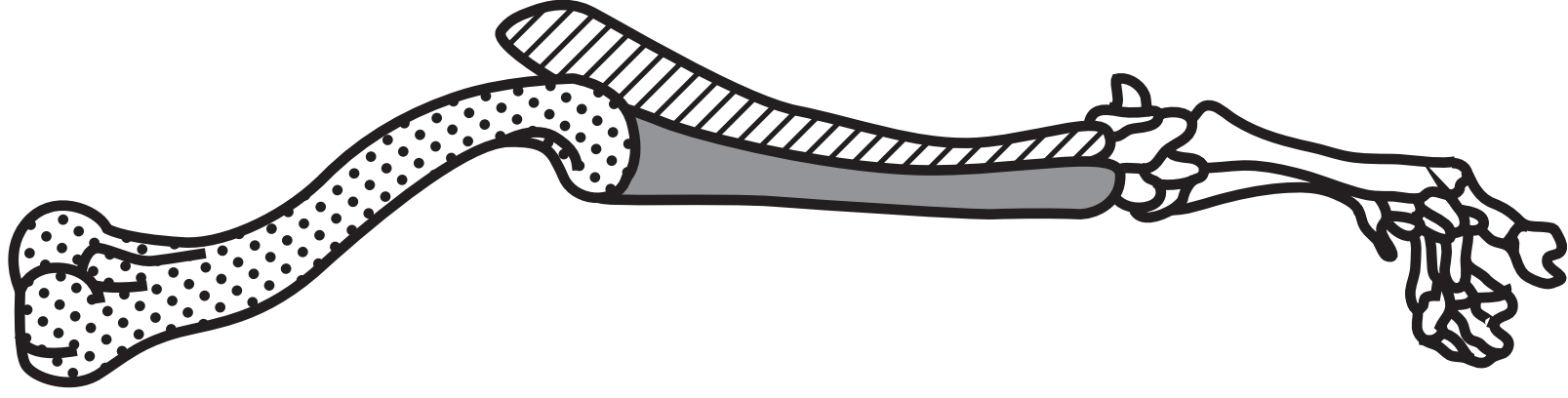
<b>stage of cell cycle</b>	<b>number of cells</b>
<b>Interphase</b>	<b>44</b>
<b>Prophase</b>	<b>12</b>
<b>Metaphase</b>	<b>6</b>
<b>Anaphase</b>	<b>18</b>
<b>Telophase</b>	<b>9</b>

FIGURE 7

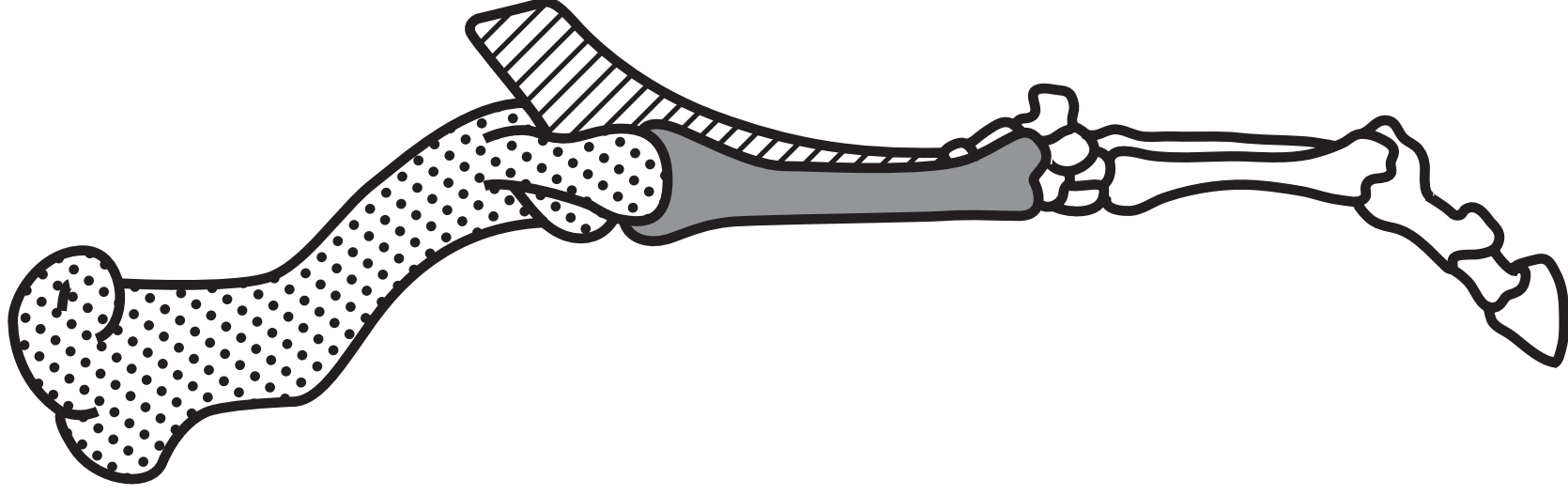
human



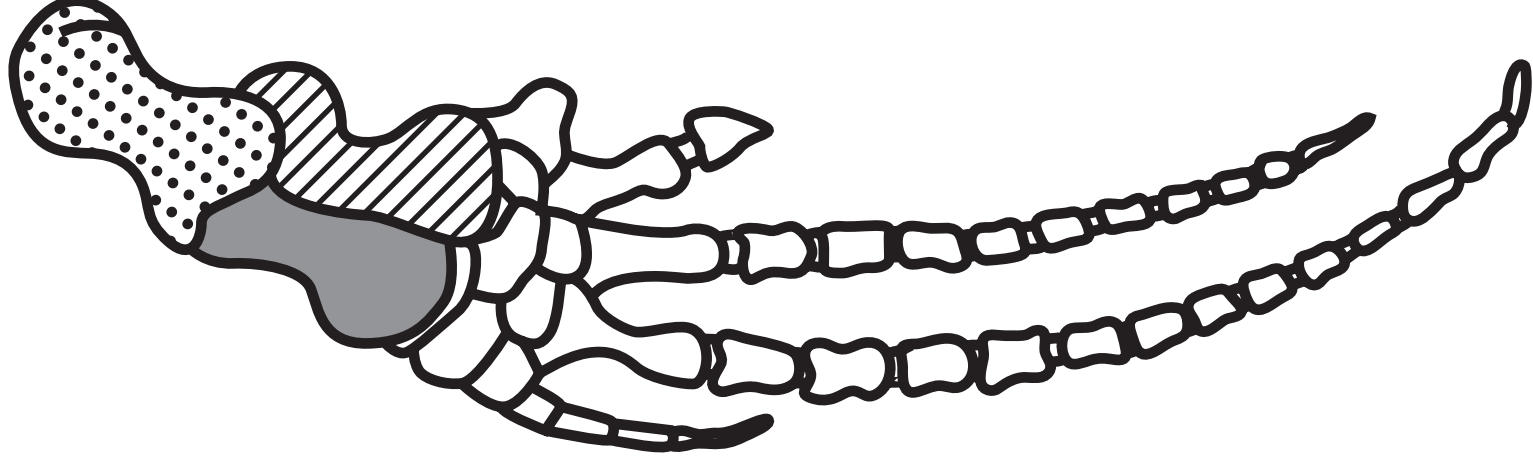
cow



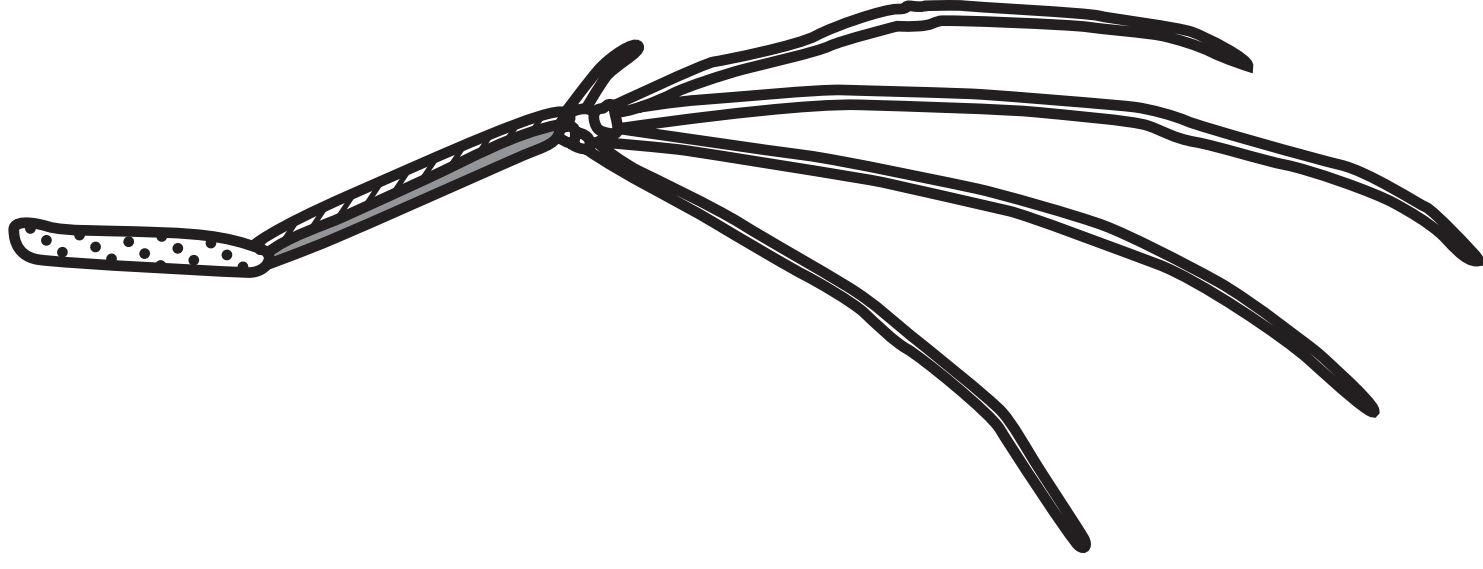
horse



whale

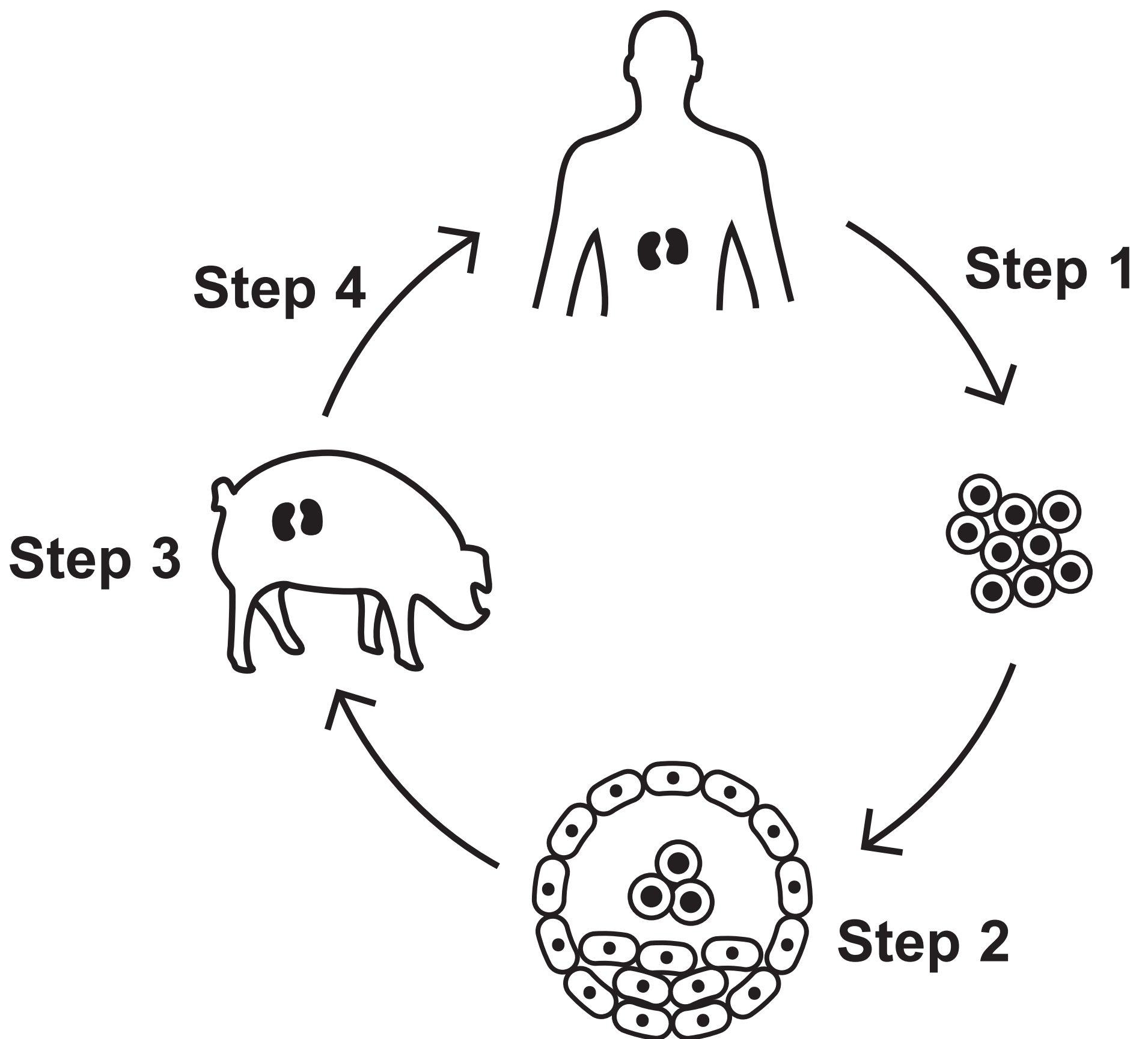


bird



## Question 9

FIGURE 8



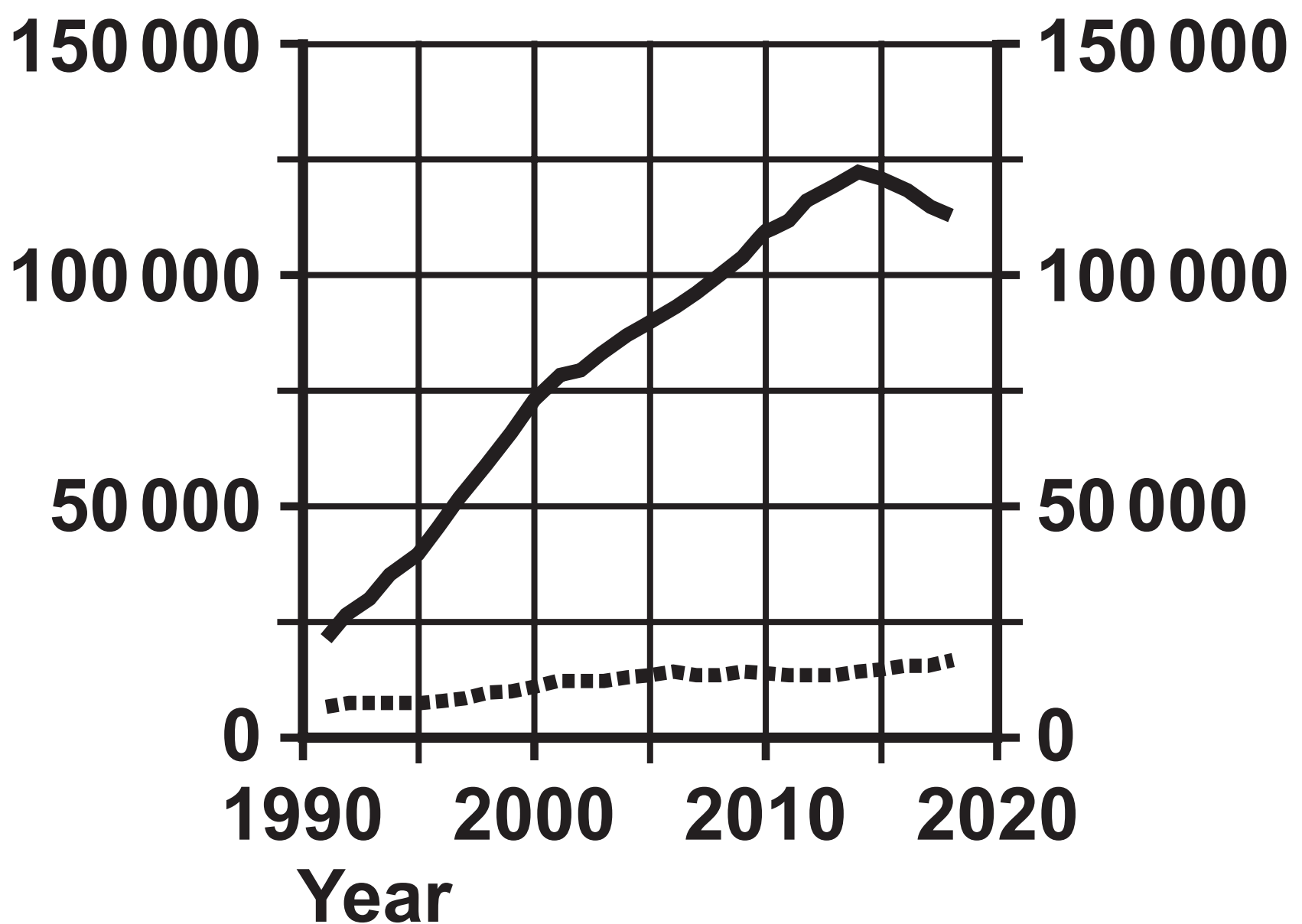
## Question 9(b)

FIGURE 9

## KEY

- number of organ transplants needed
- ..... number of donors available

Number of people



**Question 4(a)**

**(Source adapted from: © Kokhanchikov/  
Shutterstock)**

**Question 4(b)(ii)**

**(Source adapted from: © Magic mine/  
Shutterstock)**

**Question 6**

**(Source adapted from: © Nana\_studio/  
Shutterstock)**